

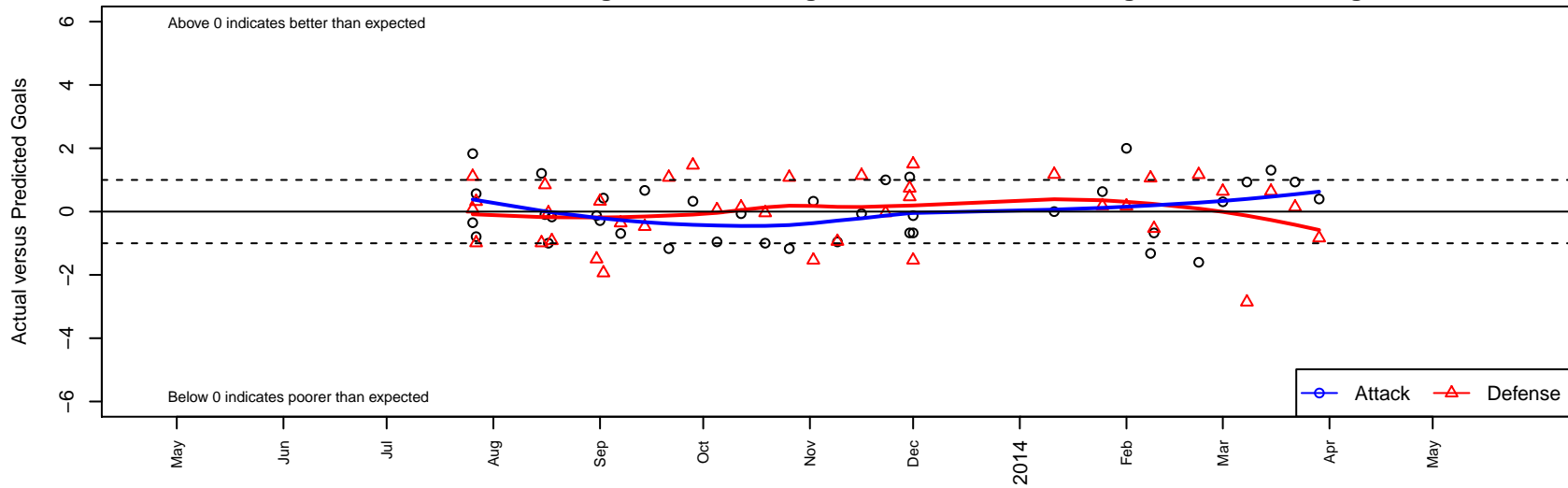
Crossfire Select Granston G01

Crossfire Select
 Redmond, WA
 G01 total strength=642
 attack=0.69 defense=0.49
 fall league = NPSL G12D1, NPSL Spr G12D1
 alt names used:
 Crossfire Select Granston G01
 Crossfire Select G01 Granston

Venues played:
 Crossfire Select Cup GU12 Gold
 Bigfoot Silver U12
 Labor Day Cup GU12
 NPSL G12D1
 Cranberry Cup U12
 Founders Cup G01
 NPSL Spr G12D1



Crossfire Select Granston G01
 Dots are actual minus expected GF (blue circles) and GA (red triangles).
 Blue line is smoothed change in attack strength. Red is smoothed change in defense strength.



| | date | home | | away | | venue | pred.home | pred.away |
|------|------------|--------------------------------|---|---------------------------------|---|--------------------|-----------|-----------|
| 7524 | 2014-03-29 | Kent United White G01 | 2 | Crossfire Select Granston G01 | 3 | NPSL Spr G12D1 | 1.17 | 2.60 |
| 7465 | 2014-03-22 | Crossfire Select Granston G01 | 2 | Kent United Green G01 | 1 | NPSL Spr G12D1 | 1.07 | 1.14 |
| 7379 | 2014-03-15 | Crossfire Select Granston G01 | 3 | Seattle United S Black G01 | 0 | NPSL Spr G12D1 | 1.69 | 0.64 |
| 7280 | 2014-03-08 | Kent United Green G01 | 4 | Crossfire Select Granston G01 | 2 | NPSL Spr G12D1 | 1.14 | 1.07 |
| 7179 | 2014-03-01 | Seattle United S Black G01 | 0 | Crossfire Select Granston G01 | 2 | NPSL Spr G12D1 | 0.64 | 1.69 |
| 7103 | 2014-02-22 | Crossfire Select Granston G01 | 1 | Kent United White G01 | 0 | NPSL Spr G12D1 | 2.60 | 1.17 |
| 7037 | 2014-02-09 | Crossfire Select Granston G01 | 0 | NSC Velocity G01 | 2 | Founders Cup G01 | 0.67 | 1.47 |
| 7015 | 2014-02-08 | Crossfire Select Granston G01 | 0 | Washington Timbers Burgundy G01 | 0 | Founders Cup G01 | 1.32 | 1.06 |
| 6986 | 2014-02-01 | Crossfire Select Granston G01 | 4 | Tacoma United Mojонера G01 | 1 | Founders Cup G01 | 2.00 | 1.17 |
| 6954 | 2014-01-25 | ISC Arsenal Red G01 | 0 | Crossfire Select Granston G01 | 4 | Founders Cup G01 | 0.18 | 3.37 |
| 6861 | 2014-01-11 | Crossfire Select Granston G01 | 2 | Tacoma United Mojонера G01 | 0 | Founders Cup G01 | 2.00 | 1.17 |
| 6800 | 2013-12-01 | West Seattle En Fuego G01 | 0 | Crossfire Select Granston G01 | 1 | Cranberry Cup U12 | 1.50 | 1.13 |
| 6801 | 2013-12-01 | NSC Velocity G01 | 3 | Crossfire Select Granston G01 | 0 | Cranberry Cup U12 | 1.47 | 0.67 |
| 6769 | 2013-11-30 | NSC Reign G01 | 0 | Crossfire Select Granston G01 | 3 | Cranberry Cup U12 | 0.74 | 1.91 |
| 6770 | 2013-11-30 | Crossfire Select Granston G01 | 0 | NSC Velocity G01 | 1 | Cranberry Cup U12 | 0.67 | 1.47 |
| 6670 | 2013-11-23 | Seattle United W Blue G01 | 1 | Crossfire Select Granston G01 | 3 | NPSL G12D1 | 0.96 | 2.00 |
| 6581 | 2013-11-16 | Crossfire Select Granston G01 | 1 | Kent United Green G01 | 0 | NPSL G12D1 | 1.07 | 1.14 |
| 6479 | 2013-11-09 | Crossfire Select Granston G01 | 1 | Crossfire Select Wilkinson G01 | 2 | NPSL G12D1 | 1.96 | 1.06 |
| 6336 | 2013-11-02 | NSC Velocity G01 | 3 | Crossfire Select Granston G01 | 1 | NPSL G12D1 | 1.47 | 0.67 |
| 6179 | 2013-10-26 | Crossfire Select Granston G01 | 0 | Lake Hills Extreme G01 | 0 | NPSL G12D1 | 1.17 | 1.08 |
| 6021 | 2013-10-19 | Crossfire Select Granston G01 | 1 | Seattle United W Blue G01 | 1 | NPSL G12D1 | 2.00 | 0.96 |
| 5857 | 2013-10-12 | Kent United Green G01 | 1 | Crossfire Select Granston G01 | 1 | NPSL G12D1 | 1.14 | 1.07 |
| 5675 | 2013-10-05 | Crossfire Select Wilkinson G01 | 1 | Crossfire Select Granston G01 | 1 | NPSL G12D1 | 1.06 | 1.96 |
| 5502 | 2013-09-28 | Crossfire Select Granston G01 | 1 | NSC Velocity G01 | 0 | NPSL G12D1 | 0.67 | 1.47 |
| 5367 | 2013-09-21 | Lake Hills Extreme G01 | 0 | Crossfire Select Granston G01 | 0 | NPSL G12D1 | 1.08 | 1.17 |
| 5201 | 2013-09-14 | Crossfire Select Granston G01 | 5 | MIFC Thunder G01 | 1 | NPSL G12D1 | 4.33 | 0.53 |
| 5046 | 2013-09-07 | Seattle United S Black G01 | 1 | Crossfire Select Granston G01 | 1 | NPSL G12D1 | 0.64 | 1.69 |
| 5015 | 2013-09-02 | Crossfire Select Granston G01 | 1 | ISC Gunners A G01 | 4 | Labor Day Cup GU12 | 0.57 | 2.06 |

| | date | home | | away | | venue | pred.home | pred.away |
|------|-------------|-------------------------------|---|-------------------------------|---|--------------------------------|------------------|------------------|
| 5006 | 2013-09-01 | PacNW Maroon G01 | 6 | Crossfire Select Granston G01 | 0 | Labor Day Cup GU12 | 6.32 | 0.28 |
| 4987 | 2013-08-31 | West Seattle En Fuego G01 | 3 | Crossfire Select Granston G01 | 1 | Labor Day Cup GU12 | 1.50 | 1.13 |
| 4825 | 2013-08-18 | Lake Hills Extreme G01 | 2 | Crossfire Select Granston G01 | 1 | Bigfoot Silver U12 | 1.08 | 1.17 |
| 4754 | 2013-08-17 | Seattle United W Blue G01 | 1 | Crossfire Select Granston G01 | 1 | Bigfoot Silver U12 | 0.96 | 2.00 |
| 4716 | 2013-08-16 | Crossfire Select Granston G01 | 2 | WPFC Fury Black G01 | 0 | Bigfoot Silver U12 | 2.09 | 0.85 |
| 4705 | 2013-08-15 | Crossfire Select Granston G01 | 3 | RSA Elite Heather G01 | 2 | Bigfoot Silver U12 | 1.79 | 1.01 |
| 4372 | 2013-07-27 | Crossfire Select Granston G01 | 1 | RSA Elite Heather G01 | 2 | Crossfire Select Cup GU12 Gold | 1.79 | 1.01 |
| 4383 | 2013-07-27 | Crossfire Select Granston G01 | 3 | Cascade FC -Unk G01 | 0 | Crossfire Select Cup GU12 Gold | 2.43 | 0.32 |
| 4339 | 2013-07-26 | Lake Hills Extreme G01 | 1 | Crossfire Select Granston G01 | 3 | Crossfire Select Cup GU12 Gold | 1.08 | 1.17 |
| 4347 | 2013-07-26 | CWSA Navy G01 | 1 | Crossfire Select Granston G01 | 1 | Crossfire Select Cup GU12 Gold | 2.11 | 1.35 |